



Your guide to  
**CULTURAL, ENRICHMENT  
& ACTIVITY WEEK TRIPS**

2019-20





# Organising a school trip?

## We're here to help.

We know it can be time consuming to plan a school trip, that's why we work hard to ease the pressure on teachers.

### Choose NST for:

- The widest range of inspiring tour programmes & student events matched to the latest exam board specifications
- A tailor-made quote with no hidden costs & flexibility to hold arrangements until deposits are collected
- FREE trip launch kit & educational resource packs
- A dedicated, educational travel expert to take care of all the details & create a smooth-running daily itinerary
- My Tour Manager - our award-winning online trip organiser - to give teachers 24/7 access to their school trip information and help keep on track of admin
- Instant access to trip information whilst on tour with our award-winning travel app
- 24-hour emergency cover, audited accommodation & transport, a wide choice of assessed excursions & FREE preview visits to assist with risk assessment planning
- On-the-ground support from NST's representatives, guides & escorts in many of our destinations
- Reassurance for parents & teachers with NST's Locate My Trip providing live updates on a group's tour location
- Financial protection - NST are fully bonded through ABTA & ATOL
- More than 50 years' experience of creating expertly planned school trips that suit the individual needs of each group



Looking for a helping hand for your next school trip?  
Get in touch today.

Call 0845 293 7974 Email us at [info@nstgroup.co.uk](mailto:info@nstgroup.co.uk)  
Visit [nstgroup.co.uk](http://nstgroup.co.uk) or chat online



We're the travel company of choice for over 35,000 group leaders. We've been awarded the Feefo Gold Service award, an independent seal of excellence for delivering exceptional experiences, as rated by real customers.



# WITH YOU EVERY STEP OF THE WAY

Taking learning beyond the classroom is widely known to help young people build strong, positive relationships and independence, as well as improving academic achievement. A school trip often brings a sense of experience and enjoyment to learning, supporting the wider character development and resilience students need to deal with life's inevitable challenges.

At NST, we passionately believe in the importance of enriching educational experiences outside the classroom. That's why you won't find a wider choice of destinations, inspiring visits, educational guided tours, and hands-on workshops anywhere else. This year, we've also introduced our LIVE! student events led by industry professionals, giving students a bridge into the world beyond the classroom as they prepare to become work-ready.

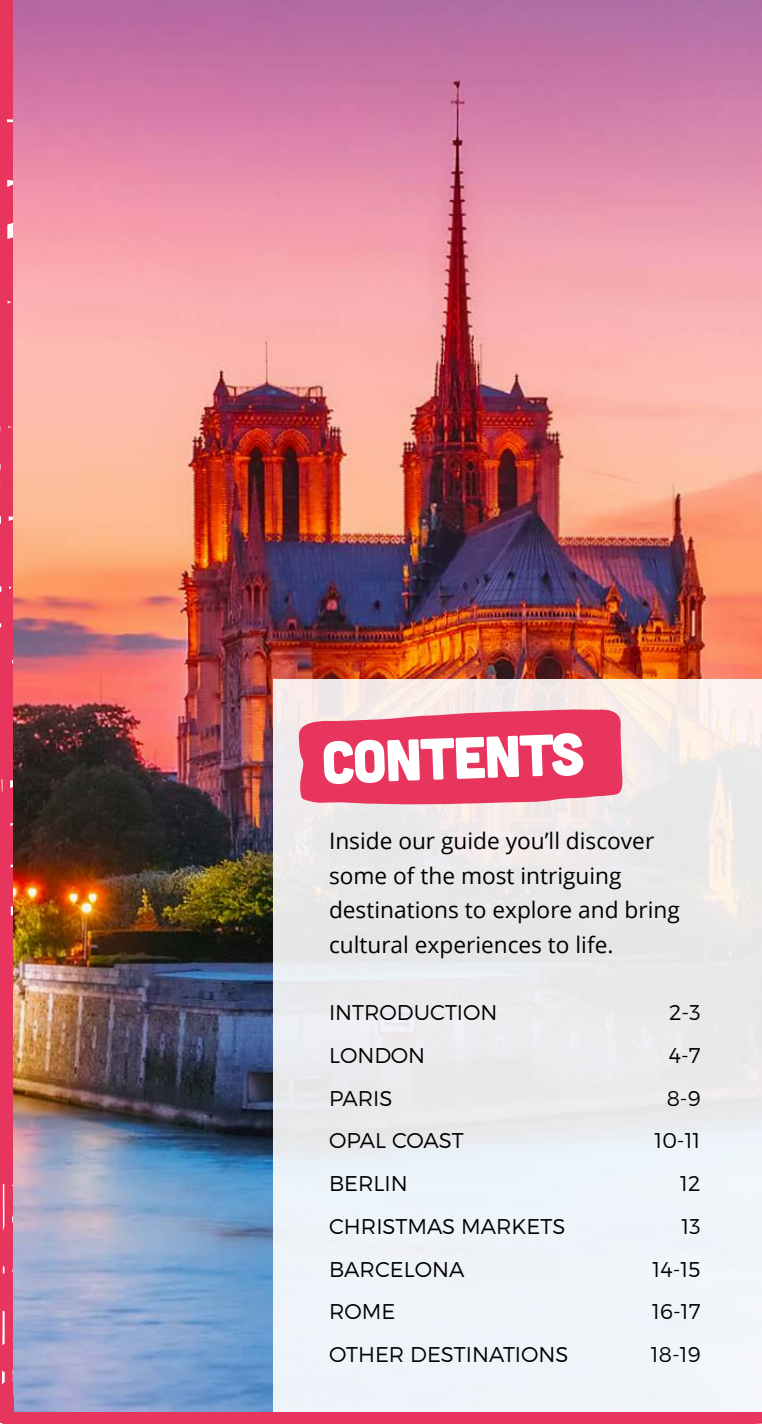
When it comes to organising a school trip, we understand just how much time and energy it can take on top of teaching. What's more, many schools are not aware that when they arrange transport, accommodation, and other services directly themselves, they'll have all the responsibilities of a travel company - both legal and financial - under the new Package Travel & Linked Travel Arrangements Regulations 2018.

That's where NST can help. We're an LOfC accredited provider, giving you peace of mind that all the elements of your trip have been carefully checked on your behalf - a view supported by the DfE's recent recommendations on selecting a travel provider.

We're the travel company of choice for over 35,000 group leaders, but we know that what counts is the help and support that you receive. That's why we're committed to doing our absolute best to provide you with the experience and support that you need to match your requirements and budget and create a school trip that your students will remember long after they return to the classroom.



**STEVE CRAVEN**  
NST Director



## CONTENTS

Inside our guide you'll discover some of the most intriguing destinations to explore and bring cultural experiences to life.

INTRODUCTION	2-3
LONDON	4-7
PARIS	8-9
OPAL COAST	10-11
BERLIN	12
CHRISTMAS MARKETS	13
BARCELONA	14-15
ROME	16-17
OTHER DESTINATIONS	18-19

## START PLANNING & SAVE!

Book by the end of May 2019 & SAVE  
£20pp on all long haul tours  
& £10pp on all European tours.

## FREE PLACES

We offer a generous free place ratio of 1 in 10 for air travel and 1 in 8 for coach travel.

## LOYALTY REWARD

Save £5pp from your first consecutive year of travel onwards with our loyalty reward.

## INSPECTION VISITS

Free inspection visit to assist with your school tour risk assessments. 2 night complimentary stay for 2 people in your chosen destination.



# LONDON

ideal for



GROUP  
BONDING  
& REWARD



CULTURAL



ENRICHMENT  
& ACTIVITY  
WEEK



prices start  
from

£ **99** PP

See page 7 for what's included

St Peter's School

## BIG CITY EXPERIENCE

For a school trip that will inspire and engage your pupils you need look no further than our very own capital city! We can create a school tour itinerary to suit your tour objectives, the range of visits make it perfect for enrichment week, a cultural tour or a group bonding and reward trip.

Almost 600 groups travel with NST to London every year, as well as being great fun, the visits offer pupils the opportunity to cover many aspects of their curriculum in a short space of time. By choosing NST, you'll receive valuable advice and expertise on hundreds of visits, as well as excellent prices at top attractions, West End shows and pupil-friendly accommodation.

### OUR LONDON TOURS AIM TO GIVE PUPILS:

- ✓ The opportunity to learn outside the classroom
- ✓ Experience big city life
- ✓ Widen their horizons
- ✓ Learn new skills and meet new people
- ✓ Develop resilience, independence and confidence
- ✓ Promote moral, cultural and social development



## DISNEY'S THE LION KING VISIT PACKAGE

FROM £49 PP:

For groups wanting to see Disney's The Lion King, why not combine it as part of a great value package?

This includes:

- Disney's The Lion King show ticket
- Disney's The Lion King educational workshop
- Theatre bundle - brochure, drink & ice cream delivered to your seat

### DISNEY'S THE LION KING EDUCATIONAL WORKSHOPS

Popular with school groups, these hands on explorations of theatrical performance are led by expert Disney Teaching Artists, giving participants the opportunity to perform scenes, songs and dances from the award-winning musical.



© Disney



# TRIP HIGHLIGHTS



## WEST END SHOW

A West End show is a magical and unforgettable experience and a must for school groups visiting the city!



## WEST END WORKSHOPS

Fun workshop designed to teach the techniques used by actors. Options include Stage Combat, Song in Performance, Dance & Acting.



## THAMES RIVER CRUISE

Take in London's best-loved sights on this enjoyable cruise.



## NATURAL HISTORY MUSEUM

At this exciting museum, your pupils can explore the natural world and discover the amazing diversity of life that has evolved on our planet.



## MADAME TUSSAUDS

Madame Tussauds London combines glitz and glamour with incredible history with over 300 wax figures.



## BLUE BADGE GUIDED TOUR

See the major sights of the city with an expert Blue Badge Guide who will bring the capital to life.



## GROUP BONDING & REWARD

Suggested itinerary



## CULTURAL

Suggested itinerary



## ENRICHMENT & ACTIVITY WEEK

Suggested itinerary

**DAY 1**

Morning departure from school.  
Wembley Stadium tour.  
Check in to accommodation.  
Meal at Hard Rock Café.  
Jack the Ripper tour.

**DAY 1**

Morning departure from school.  
Coca Cola London Eye.  
Check in to accommodation.  
National Gallery.  
Meal at Planet Hollywood.

**DAY 1**

Morning departure from school.  
Thames river cruise.  
Check in to accommodation.  
Meal at Hard Rock Café.  
West End Show.

**DAY 2**

Thames river cruise.  
Disney's The Lion King workshop.  
Meal at Maxwell's, Covent Garden.  
The Lion King West End show.

**DAY 2**

Globe Exhibition & tour.  
Covent Garden.  
Meal at Pizza Express.  
West End Show.

**DAY 2**

Visit to Warner Bros. Studio Tour London – The Making of Harry Potter.  
Meal at Bubba Gump.  
Bowling.

**DAY 3**

Science museum.  
Depart for return journey to school.

**DAY 3**

Thames river cruise.  
Depart for return journey to school.

**DAY 3**

Coca Cola London Eye.  
Depart for return journey to school.

For prices for this itinerary, please call us.

For prices for this itinerary, please call us.

For prices for this itinerary, please call us.

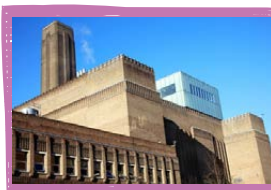


# MORE TRIP HIGHLIGHTS



## THE SHARD

Visit the tallest building in Western Europe and see how The Shard has redefined London's skyline.



## TATE MODERN

Britain's spectacular museum of modern and contemporary international art.



## THE SCIENCE MUSEUM

The Science Museum is packed with awe-inspiring galleries, interactive resources and inspirational exhibitions.



## TOWER OF LONDON

Learn about some of England's famous monarchs, visit Traitor's Gate, the Tower Ravens, the Royal Fusilier Museum and the new Jewel House.



## THE LONDON DUNGEON

The Dungeon will reinforce your pupils' historical education in an accurate, dramatic and thought-provoking way.



## V&A MUSEUM

The holdings of ceramics, glass, costumes, jewellery, furniture, sculpture, prints and photographs are among the largest and broadest in the world.

### TOP VISIT



Step on to authentic sets, discover the magic behind spellbinding special effects and explore the behind-the-scenes secrets of the Harry Potter™ film series.

Located at the Studios where it all began.

New for 2019 – enter the set of Gringotts Wizarding Bank!

#### EDUCATIONAL WORKSHOPS:

A programme of educational workshops has been created to complement the Studio Tour. These workshops are delivered in a purpose-built classroom and use the Harry Potter™ film series as an example of the wider context and theories surrounding filmmaking and design. You'll get access to free downloadable pre- and post-visit resource packs to use in the classroom.

Workshop options include: • Screenplay Stories • Costume Characterisation • Costume Distressing • Pitching • Instructional Writing

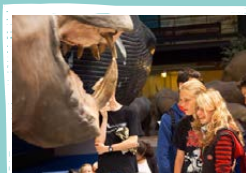
TM & © 2019 Warner Bros. Entertainment Inc.  
Harry Potter Publishing Rights © JKR.

## LONDON DAY TRIPS & THEME PARKS

great value options with limited time out of the classroom!

Great options for activity week, a class reward for hard work or to encourage team working skills.

**LONDON DAY TRIPS** - Whether you're looking into history, geography, science, or you just want an exciting experience for your pupils, London offers it all. Popular visits include:



**NATURAL HISTORY MUSEUM**



**THAMES CRUISE**

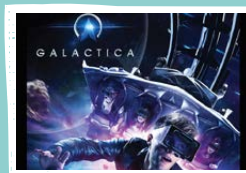


**SCIENCE MUSEUM**



**BLUE BADGE GUIDED TOUR**

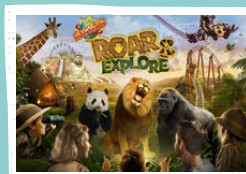
**THEME PARKS** - Our theme park options offer a range of educational benefits including curriculum-linked resources for use prior, during and after your visit. Popular visits include:



**ALTON TOWERS**



**THORPE PARK**



**CHESSINGTON WORLD OF ADVENTURES**



**LEGOLAND WINDSOR RESORT**





St Peter's School

## DON'T MISS...

### • NATIONAL THEATRE BACKSTAGE TOUR

Go backstage at Britain's largest theatre complex with exclusive access to unseen parts of the building, including the workshops where sets and props are created.

### • MUSEUM OF LONDON

Explore a dynamic period in London's history when it was the Roman city of Londinium, including examples of ceramics, metalwork and coins.

### • GLOBE EXHIBITION & TOUR

The Globe exhibition and tour offers pupils the opportunity to learn more about this unique building and its most famous playwright, Shakespeare.

### • NATIONAL GALLERY

An outstanding collection of Old Masters from the early Renaissance to 1900. The five floors are arranged chronologically, making it easy for pupils to track artistic progression.

### • WEMBLEY TOUR

Visit the new stadium to see England's changing rooms, the players' warm-up zone, the post match interview area and more!

### • JACK THE RIPPER TOURS

On this truly eerie walk your group will be led around the very streets where the story of Jack the Ripper unfolded.

### • COCA-COLA LONDON EYE

For a fantastic bird's eye view of England's capital city, take a ride on the Coca-Cola London Eye.

### • FREE TIME

London is a fantastic city for your group to explore. Covent Garden in particular is a great place to watch the many street performers.

**SEE MORE ONLINE** 

## ACCOMMODATION



### MEININGER HYDE PARK

In an ideal central location offering a unique blend of high quality accommodation, full meal options and large selection of conference rooms.



### YHA THAMESIDE

Purpose-built hostel offering safe, secure and clean accommodation plus great meals.



### ROYAL NATIONAL HOTEL

A large, busy hotel offering a good standard of accommodation in a central location. The hotel offers a good range of facilities and represents value for money.



### PREMIER INN

All hotels belonging to the Premier Inn chain offer comfortable accommodation and are located close to a tube station offering easy access to London.

**Price includes:** 1 night's B&B accommodation, executive coach transport from & to school & throughout your stay, group travel insurance & 1 in 8 free place ratio. Price shown based on 40 paying passengers from selected departure points, travelling in November 2019.



# PARIS

ideal for



CULTURAL



ENRICHMENT  
& ACTIVITY  
WEEK



BOOK BY  
END OF MAY  
& SAVE  
£10 PP

prices start  
from

£189 PP

See page 9 for what's included

## LA MAGIE DE PARIS

Paris is one of NST's most popular overseas destinations as well as one of Europe's most iconic and popular cities. In this mesmerising metropolis you'll find an endless collection of iconic landmarks, architectural masterpieces and amazing museums.

The French capital offers an abundance of exciting visits and attractions which touch upon much of the curriculum. As well as being a fun and cultural experience, Paris is perfect for enrichment week with lots of activities for your group to do, we can provide free resources for town trails which are perfect for language and mathematical skills.

An experience here is not to be missed and will expand your pupils' cultural awareness and encourage group bonding too!

### OUR PARIS TOURS AIM TO GIVE PUPILS:

- ✓ The opportunity to learn outside the classroom
- ✓ Experience a cultural, iconic city
- ✓ Develop a greater understanding of unfamiliar surroundings
- ✓ Develop French language skills
- ✓ Develop resilience, independence and confidence
- ✓ Promote moral, cultural and social development



### EXPERIENCE THE MAGIC OF

Disneyland  
PARIS

Both Disneyland® Park and Walt Disney Studios® Park provide a great environment for your pupils to work together, bond as a class and challenge their personal boundaries.

Why not include a visit during your trip?

**DISNEYLAND® PARK** Explore five themed lands filled with Disney classic stories: adrenalin packed thrill rides such as Big Thunder Mountain, Disney classics like Pirates of the Caribbean and Dumbo the Flying Elephant and many opportunities to meet your favourite Disney Characters.

**WALT DISNEY STUDIOS® PARK** Step through the studio gates and immerse yourself in the fascinating world of movies, animation and television. Find out how Disney creates the magic and feel what it's like to be star of stage and screen.

**DISNEY PARK HOPPER TICKET OFFER** 2 days for the price of 1! Call for details.

© Disney



# TRIP HIGHLIGHTS

SEE MORE ONLINE 



## MONTPARNASSE TOWER OBSERVATION DECK

This 196m tower offers a fabulous 360° view of Paris, with a stunning 25 miles of visibility on clear days.



## SEINE RIVER BOAT CRUISE

An enjoyable river cruise along the Seine is a relaxing way to get a unique view of the city and catch a glimpse of some of the famous landmarks.



## MONTMARTRE & SACRÉ COEUR

Montmartre provides an opportunity for pupils to practise their language skills with its many street stalls and street artists, shops and cafés.



## STADE DE FRANCE

Take your pupils behind-the-scenes of France's premier stadium. Take a tour, in French or English, of the fifth-largest stadium in Europe.



## CITE DES SCIENCES

France's largest planetarium has 30,000m² of interactive exhibits, exploring man's experiences with science.



## LOUVRE MUSEUM

Probably the most famous museum in the world and home to some of the finest collections of antiquities, sculpture and art.



### CULTURAL

Suggested itinerary

DAY 1

Morning departure from school, check in to accommodation. Guided tour of Paris.

DAY 2

Centre Pompidou. Seine River Cruise. Sightseeing at Montmartre & Sacré Coeur. Montparnasse Tower Observation Deck.

DAY 3

Film location walking tour. Departure for return journey to school.

For prices for this itinerary, please call us.



### ENRICHMENT & ACTIVITY WEEK

Suggested itinerary

DAY 1

Morning departure from school, check in to accommodation. Disney Village. Buffalo Bill's Wild West Show.

DAY 2

Disneyland® Paris & Walt Disney Studios Park.

DAY 3

Disneyland® Paris & Walt Disney Studios Park. Departure for return journey to school.

For prices for this itinerary, please call us.

### DON'T MISS...

- Guided Tour of Paris
- Film Location walking tour
- Centre Pompidou
- Eiffel Tower
- Fly View Paris
- Parc Astérix
- Fragonard Perfumery
- Notre Dame Cathedral
- Château Versailles

### ACCOMMODATION



#### KYRIAD DISNEYLAND

This hotel is located just outside Disneyland® Park and a short train journey from Paris city centre.



#### FIAP JEAN MONNET

This simple, clean accommodation comes highly recommended and has the best facilities of all the centres in Paris.

**Price includes:** 2 nights' B&B accommodation, executive coach transport from & to school & throughout your stay, services of an NST Paris City Representative to assist with check-in & provide 24hr assistance, extensive group travel insurance & 1 in 8 free place ratio. Price shown based on 40 paying passengers from selected departure points, travelling in February 2020.



# OPAL COAST

NORTHERN FRANCE

ideal for



GROUP  
BONDING  
& REWARD



ENRICHMENT  
& ACTIVITY  
WEEK

BOOK BY  
END OF MAY  
& SAVE  
£10 PP

prices start  
from

£109 PP

See page 11 for what's included

## CULTURE, CUISINE & CONVERSATION

The Opal Coast is a fantastic location to get a real taste of France. Staying at NST's Château d'Eblinghem, makes your role as group leader that bit easier - with free resources for varied activities and your very own Group Co-ordinator, the château is a firm favourite for many groups who return year after year, suitable for small groups through to whole year groups, perfect for a year group bonding trip, enrichment and activity week or a Christmas markets trip.

The château is ideally positioned for the WWI battlefields for an authentic WWI experience, which can be combined with evening activities organised by your Group Co-ordinator. Your group can visit traditional boulangeries, small farms producing local delicacies, and even a theme park!

### OUR OPAL COAST TOURS AIM TO GIVE PUPILS:

- ✓ The opportunity to learn outside the classroom
- ✓ Develop a greater understanding of historical events
- ✓ Develop French language skills
- ✓ To work as part of a team towards a shared goal
- ✓ Develop resilience, independence and confidence
- ✓ Promote moral, cultural and social development



## NST'S CHÂTEAU D'EBBLINGHEM

### EXCLUSIVE SCHOOL GROUP ACCOMMODATION

Suitable for small groups through to whole year groups - Perfect for a year 7 bonding trip, Christmas markets or enrichment and activity week.

- Purpose built accommodation - Alongside the 19th century French country house stands a number of accommodation buildings. We built these from the ground up with your needs in mind.
- Support of a Group Co-ordinator - They will be your main point of contact at the Château and it's their job to make your stay as comfortable and hassle-free as possible.
- Safe and secure - Only NST staff and groups are allowed onto the grounds.
- Outstanding recreational facilities - How does four hectares of private ground, two football pitches, volleyball area and a games room sound?
- Your own group leaders' lounge - Sometimes it's necessary to have a bit of a breather and get your feet up, and you can do so in your own private group leaders' lounge where you'll be served complimentary wine & cheese each evening.



# TRIP HIGHLIGHTS

SEE MORE ONLINE 



## LOCAL BOULANGERIE VISITS

Your pupils will learn the process of making traditional French bread, before getting the chance to produce and eat their own.



## P&J CHOCOLATES

This shop in Calais makes delicious chocolates daily and offers demonstrations and workshops on the chocolate-making process and its history.



## NAUSICAÁ SEA CENTRE

Home to Europe's biggest aquarium with over 58,000 creatures, including hammerhead sharks, manta rays, clownfish and shoals of fish.



## GOAT FARM

Gain an insight into French goat farming and cheese making.



## L' ESCARGOTIÈRE

Learn how one of France's most famous foods, snails, are reared.



## BECASUC SWEET FACTORY

Learn how to make sweets from French commentary and demonstrations.



## GROUP BONDING & REWARD

Suggested itinerary



## ENRICHMENT & ACTIVITY WEEK

Suggested itinerary

## DON'T MISS...

- WWI Battlefields
- Aqualud
- Menin Gate Last Post Ceremony
- Town Treasure Trails
- Waffle Factory



## FIND OUT MORE ABOUT THE CHÂTEAU

To take a closer look at the fantastic facilities and benefits of staying at NST's Château, watch our short online film at:

[nstgroup.co.uk/chateau-debblinghem](http://nstgroup.co.uk/chateau-debblinghem)

**DAY 1** Morning departure from school. Arrive & check in to the Château. Evening meal followed by team games.

Demonstration & tasting at a local boulangerie.

**DAY 2** P&J Chocolates & a visit to a goat farm. Evening meal followed by a French quiz night.

**DAY 3** Visit Boulogne & explore the market using your NST town treasure trail. Nausicaá Sea Centre. Evening meal & disco.

**DAY 4** Musée de l'Abeille d'Opale – bee-keeping visit. Departure for return journey to school.

For prices for this itinerary, please call us.

**DAY 1** Morning departure from school. Arrive & check in to the Château. Evening meal followed by French evening - crepe making & snail tasting.

**DAY 2** WWI Battlefields day around Ypres: Tyne Cot Cemetery, In Flander's Fields Museum. Meal at local restaurant. Last Post ceremony at Menin Gate.

**DAY 3** Demonstration & tasting at a local boulangerie. St Martin Choquel snail farm. Evening meal & disco.

**DAY 4** Visit to P&J Chocolates. Departure for return journey to school.

For prices for this itinerary, please call us.

**Price includes:** 1 night's full board accommodation staying at NST's Château d'Eblinghem, executive coach transport from & to school & throughout your stay, **services of your own Group Co-ordinator**, evening activities, extensive group travel insurance & 1 in 8 free place ratio. Price shown based on 40 paying passengers from selected departure points travelling in November 2019.



# BERLIN

ideal for



CULTURAL



BOOK BY  
END OF MAY  
& SAVE  
£10 PP

prices start  
from

£269 PP

## THE BEST OF BERLIN

Berlin is one of Europe's most historic cities and has evolved to become vibrant and cosmopolitan with educational and cultural visits. A school trip to this lively city will give pupils a greater understanding of German life, past and present. History groups can gain insight into the Cold War and the Holocaust. German language pupils will be immersed in the culture of German life, helping to reinforce classroom-based learning and enhance language skills.



### CULTURAL

Suggested itinerary

DAY  
1

Daytime flight and transfer to accommodation.  
Brandenburg Gate Museum.  
Potsdamer Platz.

DAY  
2

Guided walking tour.  
Berlin river cruise.  
Holocaust Memorial.

DAY  
3

East Side Gallery.  
Transfer to airport for return flight to UK.

For  
prices for this  
itinerary, please  
call us.

## ACCOMMODATION



### MEININGER BERLIN CENTRAL STATION

A very modern and comfortable hotel located in the heart of Berlin, which offers a high standard of room as well as good in-house facilities.



### SCHULZ HOTEL BERLIN

A large, centrally located hotel with 350 rooms. Modern and comfortable rooms with excellent facilities, providing functional group accommodation.

SEE MORE  
ONLINE

**Price includes:** 2 nights' B&B accommodation, return flights from a London airport (other departure airports are available) & overseas airport transfers, services of an NST Berlin City Representative to assist with check-in & provide 24hr assistance, extensive group travel insurance, 1 in 10 free place ratio. Price shown based on 35 paying passengers travelling in November 2019.



ideal for



GROUP BONDING & REWARD



CULTURAL

# CHRISTMAS MARKETS



BOOK BY  
END OF MAY  
& SAVE  
£10 PP

prices start  
from

£109 PP

## FESTIVE FUN

In the build-up to Christmas, take your group on an exciting trip to a winter wonderland in Germany or France. Pupils can practise and improve their language skills, enrich their cultural understanding and connect as a group. Enjoy tobogganing and ice-skating, a trip on a Ferris wheel and city sights too.



### COLOGNE CHRISTMAS MARKETS

With six different markets open daily, and well into the evening, you'll definitely maximise your time away in Cologne. See the largest Christmas tree in the Rhineland, sample local artisans' produce, visit nostalgic attractions and Santa Claus' quarter and enjoy a Christmas cruise.



### BERLIN CHRISTMAS MARKETS

Combine a traditional market experience with a visit to one of Europe's most vibrant cities. Over 60 Christmas markets and a great programme of cultural events await you. Visit the Potsdamer Platz Winter Wonderland and 'Boccia on ice'.



### LILLE CHRISTMAS MARKETS

Enjoy a magical Christmas market combined with a stay at NST's Château d'Eblinghem. From here you can visit up to three Christmas markets (Lille, Bruges and Ypres), and enjoy a Christmas quiz night and a five-course traditional Christmas dinner.

## ACCOMMODATION



### MEININGER COLOGNE

Functional and comfortable accommodation in the centre of Cologne.



### SCHULZ HOTEL BERLIN

A large, centrally located hotel with 350 modern, comfortable rooms with excellent facilities.



### CHÂTEAU D'EBBLINGHEM

NST's exclusive school group accommodation. See page 10 for further details.

**Price includes:** 1 night's full board accommodation at Château d'Eblinghem, executive coach transport from & to school & throughout your stay, extensive group travel insurance & 1 in 8 free place ratio. Price shown based on 40 paying passengers from selected departure points travelling in November 2019.

SEE MORE ONLINE



# BARCELONA

ideal for



CULTURAL



ENRICHMENT  
& ACTIVITY  
WEEK

BOOK BY  
END OF MAY  
& SAVE  
£10 PP

prices start  
from

£315 PP

See page 15 for what's included

## CULTURAL CATALONIA

A school trip to the cosmopolitan city of Barcelona certainly won't disappoint! This seaside city is steeped in history, offering a diverse range of educational visits and language enrichment experiences.

The rich history of the city, as well as the talents of its artists including Gaudí, Picasso and Dalí, is visible throughout the city's many museums, landmarks and attractions, perfect for a cultural trip or enrichment and activities week. We can provide free educational resources which are perfect for language enrichment.

With NST, we'll tailor-make your itinerary to ensure that your pupils have the opportunity to explore this colourful destination whilst building on classroom-based learning to get the most from their experience.

### OUR BARCELONA TOURS AIM TO GIVE PUPILS:

- ✓ The opportunity to learn outside the classroom
- ✓ Develop a greater understanding of unfamiliar surroundings
- ✓ Develop Spanish language skills
- ✓ To work as part of a team towards a shared goal
- ✓ Develop resilience, independence and confidence
- ✓ Promote moral, cultural and social development



## VISIT PORTAVENTURA!

PortAventura has everything to make a school trip unforgettable!

Both pupils and teachers will have a great time in the two amazing parks.

PortAventura Park is an astonishing amusement park divided in six thematic areas with many rides and shows. Costa Caribe Aquatic Park is a water park packed with waves and slides.

Together you can travel around the six themed areas of the park: Mediterrània, China, México, Polynesia, Far West and SésamoAventura.

Take in several shows, from the dazzling wonders of Teatro Imperial in China to the exotic dances of Polynesia and then enjoy the thrills and spills of the many, many rides.

PortAventura is located only ten minutes' from the mythical Roman Tarragona. Here, you'll enjoy a trip full of imagination, education, laughter and entertainment.



# TRIP HIGHLIGHTS

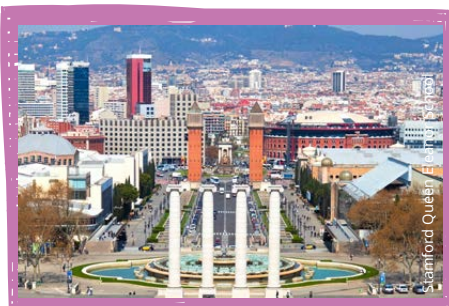


## NOU CAMP STADIUM

This world-famous football stadium offers pupils the opportunity to experience the awe-inspiring size of this venue whilst also learning about the heritage and history of Barcelona FC.

## DON'T MISS...

- **LANGUAGE WORKSHOPS** Take part in speaking and listening sessions with native speakers during this language course.
- **LAS RAMBLAS** Explore the shops, cafés and market stalls along this famous street.
- **PARK GÜELL** Visit the famous park which was designed by Antonio Gaudí.



## MONTJUÏC

This historic area provides the best views of Barcelona. Pupils can explore a range of attractions, including the Olympic Stadium and the Spanish Village, Poble Espanyol, the magic fountain, artisan workshops and tapas bars.

- **GOthic QUARTER** Explore the winding streets of this beautiful area.
- **POBLE ESPANYOL** A complete village with reconstructions of famous or characteristic buildings from all over Spain.
- **PORT VELL** The harbour is home to plenty of shops and attractions.



## LA SAGRADA FAMÍLIA

Gaudí's unfinished masterpiece remains a popular tourist attraction and a world renowned emblem of the city. Pupils will be amazed by its size and architectural complexity. Based on Gaudí's plans of 1954, the building is due to be completed in 2026.

- **CHURRO TASTING & DEMONSTRATION** Enjoy delicious churros and attend a 20 minute presentation on how to make them.
- **TAPAS TASTING** Taste a wide variety of traditional Spanish dishes.
- **MACBA** A glittering white home for late 20th century art.



## CULTURAL

Suggested itinerary

**DAY 1**

Daytime flight & transfer to accommodation.  
Poble Espanyol.

**DAY 2**

Nou Camp Stadium.  
Sagrada Família.  
Tapas tasting.

**DAY 3**

Picasso Museum.  
Gothic Quarter.  
Las Ramblas.  
Port Vell with shopping time in Maremagnum.

**DAY 4**

Free time.  
Transfer to airport for return flight to UK.

For prices for this itinerary, please call us.



## ENRICHMENT & ACTIVITIES WEEK

Suggested itinerary

**DAY 1**

Daytime flight & transfer to accommodation.  
Sagrada Família.  
Tapas tasting.

**DAY 2**

Nou Camp Stadium.  
Park Güell.  
Flamenco show.

**DAY 3**

PortAventura Theme park.

**DAY 4**

Free time.  
Transfer to airport for return flight to UK.

For prices for this itinerary, please call us.

## ACCOMMODATION



### URBANY HOSTEL

A great value for money hostel located in the heart of the city centre. Best suited to older school groups.



### SAFESTAY

A small hostel, centrally located in Barcelona. This hostel has been set up in an original, elegant modernist building.



### ALBERG PERE TARRES

A new, modern youth hostel in a central location in Barcelona.

SEE MORE ONLINE



**Price includes:** 3 nights' B&B accommodation, return flights from a London airport (other departure airports are available) & airport transfers in resort, services of an **NST Barcelona City Representative** to assist with check-in & provide 24hr assistance, extensive group travel insurance & 1 in 10 free place ratio. Price shown based on 30 paying passengers travelling in February 2020.



# ROME

ideal for



CULTURAL

## A JOURNEY INTO THE PAST & PRESENT

Combining its classical heritage with the trappings of a modern city, Rome is a fascinating destination to visit. Its centre is sufficiently compact to accommodate walking tours while its extensive and excellent metro system also affords easy access to the superb range of museums, monuments and tourist attractions, making it perfect for enrichment week or a cultural tour.

Only by visiting Rome can you really understand the splendour and decadence of 'The Eternal City' and is certain to leave your pupils feeling inspired.

### OUR ROME TOURS AIM TO GIVE PUPILS:

- ✓ The opportunity to learn outside the classroom
- ✓ Experience a cultural, historic city
- ✓ Develop Italian language skills
- ✓ Develop a greater understanding of unfamiliar surroundings
- ✓ Develop resilience, independence and confidence
- ✓ Promote moral, cultural and social development

BOOK BY  
END OF MAY  
& SAVE  
£10 PP

prices start  
from

£389 PP

See page 17 for what's included



## THE COLOSSEUM

Who can resist a visit to the Colosseum?

Amaze pupils with the monumental size and grandeur of the world's largest surviving structure of Roman antiquity, the scene of the legendary and savage gladiatorial games.

This, the largest monument of Ancient Rome and the largest amphitheatre in the world, which seated more than 50,000 spectators in its day. Your pupils will see the location where fights between men and beasts, gladiatorial contests, races and simulated naval battles took place. A visit here helps pupils to understand the importance of the spectacle in Roman society. Two thousand years on it is Italy's top tourist attraction.

Add a guide to truly set the scene and leave pupils in awe!



# TRIP HIGHLIGHTS



## VATICAN MUSEUM AND SISTINE CHAPEL

Whilst visiting St Peter's Basilica, many groups also choose to visit the Vatican Museums, including the famous Sistine Chapel. Book a guided tour with NST to help your pupils understand how the world's most well-known fresco came into being and what the imagery symbolises.



## ROMAN FORUM & PALATINE HILL

The oldest and most important structures of the ancient city, including the temple of Saturn and the complex of the Vestal Virgins. See the ruins of the Imperial Palaces and the Hut of Romulus, as well as a great view of the Circus Maximus.



## GUIDED WALKING TOUR

View the best of the baths, temples and theatres of Ancient Rome on a guided walk, which can be tailored to your requirements.

## DON'T MISS...

- **PANTHEON** Built as a temple to all the gods and rebuilt circa 126AD during Hadrian's reign.
- **THE CATACOMBS** Ancient burial grounds of the early Christians. Local guide provided.
- **THE TIME ELEVATOR** Take a journey through the development of Rome and experience multi-sensorial effects as you watch panoramic screens.
- **SPANISH STEPS** Situated in Piazza di Spagna, these 18th century majestic steps built in Baroque style are today a regular meeting place for Italians.
- **TREVI FOUNTAIN** Take a group photo at this popular evening visit.
- **BORGHESE GALLERY** A superb collection combining painting and sculptures, ideal for a compact visit.



## CULTURAL

Suggested itinerary

DAY 1

Daytime flight & transfer to accommodation.  
Guided walking tour.  
Spanish Steps & Trevi Fountain.

DAY 2

The Colosseum, Roman Forum & Palatine Hill.  
Retail therapy on Via del Corso.

DAY 3

Vatican Museum & Sistine Chapel.  
Castel Sant' Angelo.  
Palazzo del Freddo - ice cream factory tour & tasting!

DAY 4

Transfer to airport for return flight to UK.

For prices for this itinerary, please call us.

## SUPPORT IN THE CITY

### WITH NST ROME GUIDES

Our experienced, bilingual guides understand the requirements of UK school groups and will bring Rome's culture, architecture and history to life!

Our team of Rome guides include:



### RICHARD BOWEN – NST LOCAL GUIDE

Originally from the UK, Richard has lived in Rome for the last 20+ years. He holds two degrees – BA in Humanities and an MA in History and has made several programmes for the BBC and History channel.



### NORMAN FANELLI – NST CITY REPRESENTATIVE

Norman, or a member of his team will meet you on arrival, assist with hotel check-in, advise on points of interest and public transport and provide 24-hour emergency assistance. Norman is an experienced tour manager who has a deep love and knowledge of his city, which he enjoys sharing with NST groups.

## ACCOMMODATION



### HOTEL LAZIO

Offering good quality accommodation within easy reach of the main tourist areas of Rome, and within easy walking distance of the Termini Station.



### HOTEL NOTO

Offering a good standard of accommodation, located in central Rome and within easy walking distance of the Termini Station.



### HOTEL FLORIDIA

Situated in a good, central location, close to the Termini Station and within easy reach of the main sights of Rome.

SEE MORE ONLINE

Price includes: 3 nights' B&B accommodation, return flights from a London airport (other departure airports are available) & overseas airport transfers, services of an NST Rome City Representative to assist with check-in & provide 24hr assistance, extensive group travel insurance, 1 in 10 free place ratio. Price shown based on 25 paying passengers travelling in November 2019.



# EXPLORE OTHER DESTINATION

## CANTABRIA

This small region in the north of Spain is rich in history and stunning scenery and is the ideal place for a fun filled cultural school trip experience. Traditional mountain and coastal villages portray a strong heritage and contrast against the lively capital city of Santander. A school trip to Cantabria is ideal for groups seeking to share a truly authentic Spanish experience together whilst enjoying a range of educational visits.



### CULTURAL

Suggested itinerary

DAY 1

Daytime flight and transfer to accommodation.  
Explore the local beach.

DAY 2

Full day coach excursion with visits to:  
Santillana del Mar, Altamira Caves & Comillas.

DAY 3

Santander.  
Cabarceno nature park.  
Flamenco lessons.

DAY 4

Transfer to airport for return flight to UK.



For prices for this itinerary, please call us.

## MADRID

Located at the very heart of mainland Spain, Madrid is a large and lively city. During a school trip to this exciting and cosmopolitan destination, your pupils will be able to practise their Spanish language skills whilst enjoying a range of language-focused and educational visits, and soaking up the vibrant Spanish culture of this city.



### CULTURAL

Suggested itinerary

DAY 1

Daytime flight & transfer to accommodation.  
Casa de Campo.

DAY 2

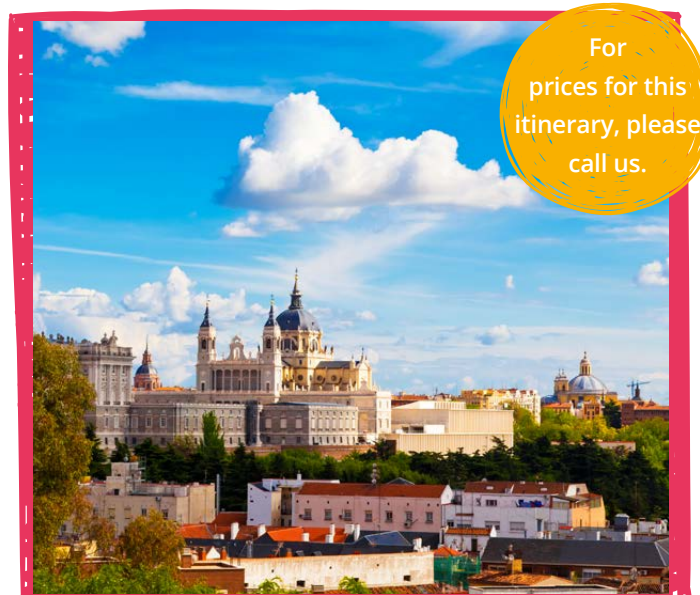
Guided walking tour.  
The Royal Palace of Madrid.  
Plaza Mayor & Gran Via.  
Tapas tasting.

DAY 3

Reina Sofia museum.  
Retiro Park.  
Flamenco show.

DAY 4

Free time for last minute shopping.  
Transfer to airport for return flight to UK.



For prices for this itinerary, please call us.



# NS WITH US

SEE MORE ONLINE 

## VENICE



A school trip to this fascinating destination is certain to leave your group feeling inspired. During your study tour here, your pupils will see traditional works of art, stunning Venetian architecture, and will leave inspired by the sheer magic of the city.

St Mark's Square, the Rialto Bridge and a gondola trip are a must!

## BAY OF NAPLES



A truly inspiring destination providing pupils with an excellent mix of cultural and historical visits. Visit Mount Vesuvius, one of the world's most active volcanoes and the preserved towns of Pompeii and Herculaneum which provide a unique insight into 1st century Roman life. Take a short ferry ride to the island of Capri with its alleyways of shops selling local artefacts, plus much, much more!

## LAKE GARDA



A favourite destination for NST groups offering a diverse range of educational visits and cultural enrichment experiences against a backdrop of dramatic mountains and sparkling waters, coupled with the typical laidback Italian culture, you can't fail to be swept away with the charm of the area. Verona and Venice are popular day trip options.

## TUSCANY



A cultural school trip to Florence will leave your pupils feeling amazed by the vast array of impressive buildings, fascinating galleries and treasure-crammed churches. Our groups are usually based in Montecatini Terme, an attractive town famous for its many natural thermal spas and surrounded by the Tuscan Hills.



# INSPIRE THEIR FUTURE CAREER AT LIVE!

Immersive student events for KS4 & KS5 learners

High calibre speakers deliver their first-hand industry experience at the event.

Our LIVE! student events combine a conference with LIVE! speaker presentations and take place in Disneyland® Paris and New York.

## Disneyland® Paris



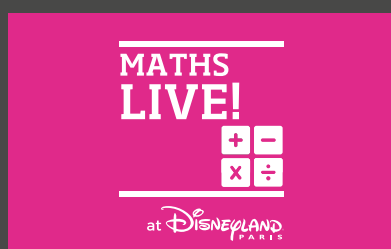
March 2020



March 2020



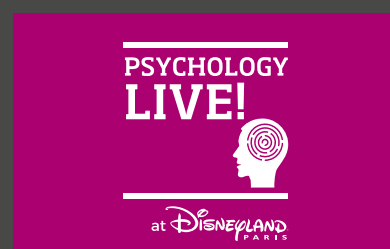
March 2020



March 2020



March 2020



March 2020

## New York



March 2020



February 2020



February 2020

CALL 0845 293 7974 EMAIL [INFO@NSTGROUP.CO.UK](mailto:INFO@NSTGROUP.CO.UK) VISIT [NSTGROUP.CO.UK](http://NSTGROUP.CO.UK)



NST, Discovery House, Brooklands Way,  
Whitehills Business Park, Blackpool,  
Lancashire, FY4 5LW

Printed on  
Forestry Commission  
paper stock.